

# Remarkable Improvement in Results

## (October MAT Report)

Percentage of schools that have entered data in October have decreased by more than 3% points in Panchkula, Kurukshetra, Jind, Ambala, Hisar, Jhajjar, Kaithal. This decrease in data entry is less than 2% points in Panipat, Mahendergarh, Sonipat, Sirsa and Bhiwani. In Yamuna Nagar, this decrease is 2% points (Table 1).

Table 1: Percentage of schools who have entered Data						
DistrictName	Total Schools	Participated	Not Participated	% schools who have entered data Oct	% schools who have entered data Sep	Change
Fatehabad	628	623	5	99.2	99.4	-0.2
Rewari	656	650	6	99.1	99.7	-0.6
Sirsa	842	830	12	98.6	99.6	-1.1
Rohtak	428	421	7	98.4	98.8	-0.5
Gurgaon	591	578	13	97.8	98	-0.2
Sonipat	723	701	22	97	98.3	-1.4
Mahendergarh	777	752	25	96.8	98.6	-1.8
Bhiwani	1141	1098	43	96.2	97.4	-1.1
Mewat	844	811	33	96.1	96.3	-0.2
Kaithal	600	576	24	96	98.8	-2.8
Panipat	424	407	17	96	97.9	-1.9
Karnal	786	753	33	95.8	96.1	-0.3
Jhajjar	536	513	23	95.7	98.7	-3
Hisar	891	850	41	95.4	98.4	-3
Yamuna Nagar	958	914	44	95.4	97.4	-2
Ambala	778	734	44	94.3	97.7	-3.3
Kurukshetra	796	751	45	94.3	98.1	-3.8
Faridabad	370	348	22	94.1	92.7	1.4
Panchkula	418	393	25	94	98.1	-4.1
Palwal	611	566	45	92.6	89.4	3.3
Jind	749	690	59	92.1	95.9	-3.7
Total	14547	13959	588	96	97.5	-1.5

In the month of October, Haryana Student attendance has decreased from 94% in August month to again 92%. Across districts, in Fatehabad and Kaithal, attendance has decreased by 5% points. In Sirsa, it has decreased by 4% points. In Faridabad, Hisar and Panipat, it has decreased by 3% points. In Ambala, Gurgaon, Karnal, Kurushetra, this decrease is 2% points (Table 2).

Table 2: District wise Students Attendance Report							
District Name	Total Students in OCT MAT	Students Appeared in OCT MAT	% attendance in OCT MAT	% attendance in Aug MAT	% attendance in July MAT	% attendance in May MAT	Change in August and October
Ambala	64205	59946	93%	95%	95%	93%	-2
Bhiwani	111032	105596	95%	96%	95%	91%	-1
Faridabad	76519	67405	88%	91%	89%	82%	-3
Fatehabad	85269	77180	91%	96%	95%	92%	-5
Gurgaon	91873	85340	93%	95%	94%	87%	-2
Hisar	115020	108567	94%	97%	96%	93%	-3
Jhajjar	43302	41452	96%	96%	96%	92%	0
Jind	93955	88141	94%	95%	95%	92%	-1
Kaithal	86645	78226	90%	95%	95%	92%	-5
Karnal	102574	95161	93%	95%	94%	91%	-2
Kurukshetra	64621	60652	94%	96%	95%	94%	-2
Mahendergarh	50493	48120	95%	95%	94%	90%	0
Mewat	151686	120564	79%	80%	76%	71%	-1
Palwal	84657	75250	89%	88%	88%	84%	1
Panchkula	41803	39273	94%	95%	94%	90%	-1
Panipat	70971	64437	91%	94%	93%	88%	-3
Rewari	51695	49345	95%	96%	95%	91%	-1
Rohtak	50818	48387	95%	96%	95%	91%	-1
Sirsa	116355	105331	91%	95%	93%	90%	-4
Sonapat	86892	83617	96%	97%	96%	93%	-1
Yamuna Nagar	74285	71078	96%	97%	96%	92%	-1
Total	1714670	1573068	92%	94%	92%	88%	-2

Results show that Sonipat district retains its first position but Gurgaon which was in tie with Sonipat in August month slips to second position and now in tie with Mahendergarh. Mahendergarh remains successful in maintaining its second position at state level. District Jhajjar also retains its third position. Likewise in previous months, Mewat, Yamuna Nagar and Palwal are again the bottom performing districts (Table 3).

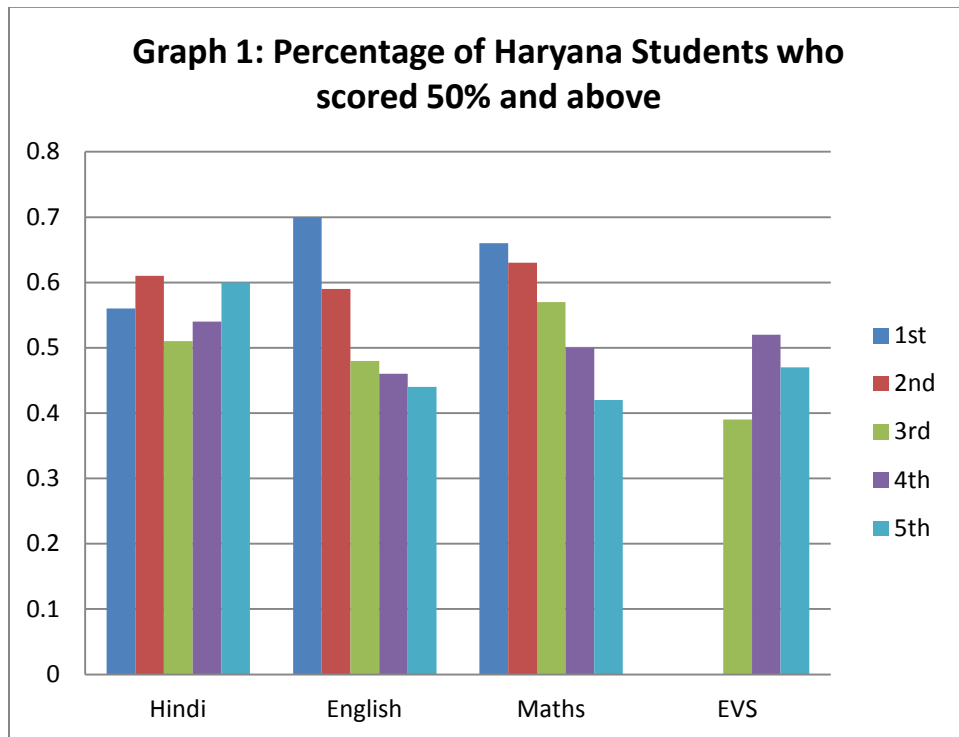
In the October monthly assessment, performance level of Haryana has increased by 9% points in comparison to August. In other words, percentage of students scoring more than 50% marks has increased from 43% in August MAT to 52% in October MAT. In all the districts performance has been increased. In Sonipat, Jhajjar and Mewat, it has increased by more than 10%. In Mahendergarh, Faridabad, Sirsa and Palwal, it has increased by 10% points. In Gurgaon, Rohtak, Panipat and Karnal, this increase is equal to state average 9% points. In rest of the districts, it has increased by less than state average (Table 3).

District Name	October	August	July	May	Change (Oct-Aug)
Sonipat	63%	51%	46%	47%	12%
Gurgaon	60%	51%	48%	49%	9%
Mahendergarh	60%	50%	49%	51%	10%
Jhajjar	59%	48%	48%	51%	11%
Rewari	56%	49%	47%	50%	7%
Rohtak	55%	46%	44%	45%	9%
Bhiwani	53%	45%	43%	45%	8%
Faridabad	53%	43%	42%	43%	10%
Panipat	52%	43%	42%	43%	9%
Jind	51%	43%	42%	41%	8%
Karnal	51%	42%	40%	44%	9%
Ambala	50%	42%	39%	40%	8%
Sirsa	50%	40%	38%	40%	10%
Kaithal	49%	42%	40%	43%	7%
Hisar	49%	42%	40%	41%	7%
Panchkula	48%	42%	39%	40%	6%
Kurukshetra	48%	42%	41%	42%	6%
Fatehabad	48%	41%	40%	39%	7%
Palwal	47%	37%	35%	34%	10%
Yamuna Nagar	44%	37%	36%	36%	7%
Mewat	38%	27%	26%	22%	11%
Haryana	52%	43%	41%	42%	9%

While discussing the class wise individual subjects at primary level across different months, it has been found that performance of class 1<sup>st</sup> students in Hindi has decreased in comparison to May and July, however similar to August month. In classes 2<sup>nd</sup>, 3<sup>rd</sup>, 4<sup>th</sup> and 5<sup>th</sup>, performance of students in Hindi has increased. In English, performance of students has increased in comparison to May in all primary classes except in 2<sup>nd</sup> class, however in comparison to August it has increased. In Mathematics, it has increased in all classes except of class 1<sup>st</sup> and 5<sup>th</sup>, where it has decreased in comparison to May but increased in comparison to July and August (Table 4).

Table 4: Percentage of Haryana Students who scored 50% and above					
Class	Month	Hindi	English	Maths	EVS
1st	October	56%	70%	66%	-----
	August	57%	59%	56%	-----
	July	72%	63%	59%	-----
	May	68%	68%	68%	-----
2nd	October	61%	59%	63%	-----
	August	54%	47%	49%	-----
	July	47%	64%	56%	-----
	May	55%	66%	61%	-----
3rd	October	51%	48%	57%	39%
	August	36%	28%	46%	29%
	July	35%	34%	37%	46%
	May	35%	35%	46%	31%
4th	October	54%	46%	50%	52%
	August	41%	51%	38%	34%
	July	38%	24%	31%	33%
	May	42%	38%	36%	38%
5th	October	60%	44%	42%	47%
	August	46%	43%	37%	43%
	July	48%	34%	38%	36%
	May	48%	38%	45%	42%

Across classes in Hindi, performance of students has decreased in class 3<sup>rd</sup> in comparison of class 1<sup>st</sup> and 2<sup>nd</sup>. In English and Mathematics, it decreases as we move from lower to upper classes at primary level. In EVS, performance has increased from class 3<sup>rd</sup> to class 4<sup>th</sup> and decreased in class 5<sup>th</sup> (Graph 1).



At upper Primary level, class wise performance in individual subjects across different months shows that in Hindi, English and Science, performance of students has increased in all classes. In Mathematics, performance has increased in class 6<sup>th</sup> and 7<sup>th</sup> but decreased in class 8<sup>th</sup>. In Social Science, it has increased in class 6<sup>th</sup> and 7<sup>th</sup> (Table 5).

Table 5: Percentage of Haryana Students who scored 50% and above						
Class	Month	Hindi	English	Mathematics	Social Science	Science
6th	October	55%	35%	36%	42%	39%
	August	41%	22%	24%	29%	27%
	July	37%	21%	23%	27%	25%
	May	37%	23%	33%	34%	34%
7th	October	65%	47%	33%	50%	48%
	August	55%	29%	32%	36%	39%
	July	48%	27%	28%	34%	31%
	May	40%	28%	29%	41%	38%
8th	October	68%	53%	28%	47%	54%
	August	50%	34%	42%	43%	39%
	July	50%	28%	30%	36%	45%
	May	45%	31%	31%	47%	41%

Across classes in Hindi, English and Science, performance of students increases as we move from class 6<sup>th</sup> to 8<sup>th</sup>. In Mathematics, it decreases as we move from 6<sup>th</sup> to 8<sup>th</sup> classes. In Social Studies, performance has increased from class 6<sup>th</sup> to class 7<sup>th</sup> and decreased in class 8<sup>th</sup> (Graph 2).

