

Success Continues

(November MAT Report)

Percentage of schools that have entered data in November is 98%. It has have increased by 2% in comparison to previous month. Across districts, it has increased by more than 2% in Panchkula, Kurukshetra, Ambala, Jind, Karnal, Panipat, Faridabad, Jhajjar and Kaithal. This has decreased only in Fatehabad by 0.5% (Table 1).

Table 1: Percentage of schools who have entered Data						
District Name	Total Schools	Participated	Not Participated	% schools who have entered data Nov.	% schools who have entered data Oct.	Change (Nov-Oct)
Rewari	656	653	3	99.5	99.1	0.4
Panipat	424	422	2	99.5	96.0	3.5
Karnal	786	782	4	99.5	95.8	3.7
Kurukshetra	796	790	6	99.2	94.3	4.9
Sirsa	842	835	7	99.2	98.6	0.6
Rohtak	428	424	4	99.1	98.4	0.7
Panchkula	418	414	4	99.0	94.0	5.0
Fatehabad	628	620	8	98.7	99.2	-0.5
Ambala	778	767	11	98.6	94.3	4.3
Gurgaon	591	582	9	98.5	97.8	0.7
Mahendergarh	777	765	12	98.5	96.8	1.7
Kaithal	600	590	10	98.3	96.0	2.3
Jhajjar	536	527	9	98.3	95.7	2.6
Bhiwani	1141	1119	22	98.1	96.2	1.9
Mewat	844	822	22	97.4	96.1	1.3
Sonipat	723	704	19	97.4	97.0	0.4
Faridabad	370	360	10	97.3	94.1	3.2
Yamuna Nagar	958	928	30	96.9	95.4	1.5
Hisar	891	862	29	96.7	95.4	1.3
Jind	749	718	31	95.9	92.1	3.8
Palwal	611	575	36	94.1	92.6	1.5
Total	14547	14259	288	98.0	96.0	2.0

In the month of November, Haryana Student attendance has increased from 92% in October month to 93%. Across districts, in Fatehabad, Kaithal, Mewat and Sirsa attendance has increased by more than state average. However, in Jhajjar, Panchkula and Rewari, this has decreased (Table 2).

Table 2: District wise Students Attendance Report

	Total Students in Nov MAT	Students appeared in Nov MAT	% Attendance in Nov MAT	% Attendance in OCT MAT	% Attendance in Aug MAT	% Attendance in July MAT	% Attendance in May MAT	Change in Nov and Oct
Ambala	68396	64271	94%	93%	95%	95%	93%	1%
Bhiwani	114544	108617	95%	95%	96%	95%	91%	0%
Faridabad	81376	71945	88%	88%	91%	89%	82%	0%
Fatehabad	86491	80486	93%	91%	96%	95%	92%	2%
Gurgaon	92122	85305	93%	93%	95%	94%	87%	0%
Hisar	120312	114876	95%	94%	97%	96%	93%	1%
Jhajjar	46017	43712	95%	96%	96%	96%	92%	-1%
Jind	100025	93968	94%	94%	95%	95%	92%	0%
Kaithal	89309	84061	94%	90%	95%	95%	92%	4%
Karnal	108584	101395	93%	93%	95%	94%	91%	0%
Kurukshetra	69975	66113	94%	94%	96%	95%	94%	0%
Mahendergarh	51919	49125	95%	95%	95%	94%	90%	0%
Mewat	152913	125403	82%	79%	80%	76%	71%	3%
Palwal	91259	81729	90%	89%	88%	88%	84%	1%
Panchkula	48829	45520	93%	94%	95%	94%	90%	-1%
Panipat	73371	67741	92%	91%	94%	93%	88%	1%
Rewari	53406	50378	94%	95%	96%	95%	91%	-1%
Rohtak	53332	50580	95%	95%	96%	95%	91%	0%
Sirsa	117537	109256	93%	91%	95%	93%	90%	2%
Sonipat	90047	86568	96%	96%	97%	96%	93%	0%
Yamuna Nagar	76012	73016	96%	96%	97%	96%	92%	0%
Total	1785776	1654065	93%	92%	94%	92%	88%	1%

Sonipat and Gurgaon districts retain their first and second position but Mahendergarh, which was in tie with Gurgaon in October month slips to third. Likewise, in previous months, Palwal, Yamuna Nagar and Mewat are again the bottom performing districts (Table 3).

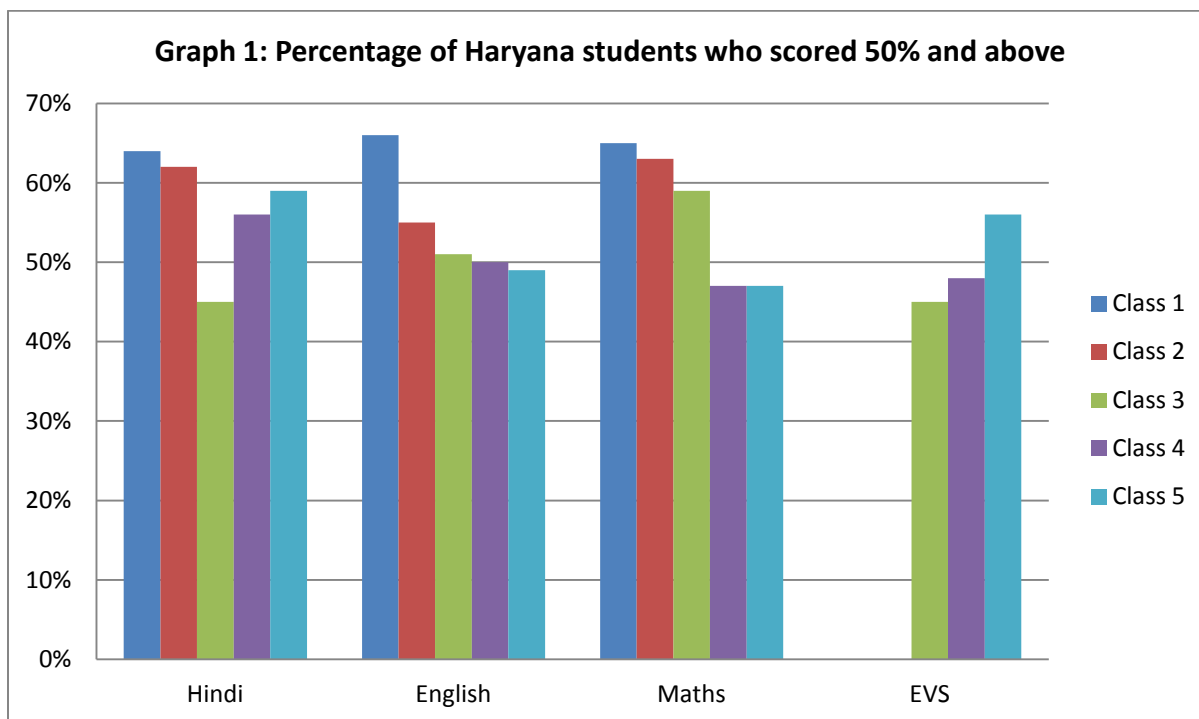
Performance level of Haryana has decreased by 1% in comparison to October. In other words, percentage of students scoring more than 50% marks has decreased from 52% in October MAT to 51% in November MAT. In eleven districts, performance level remained unchanged. Only in Gurgaon, performance level has increased by 1%. In rest of the districts, it has decreased by state average (1%) except Bhiwani, where it has decreased by 2% (Table 3).

District Name	November	October	August	July	May	Change (Nov-Oct)
Sonipat	63%	63%	51%	46%	47%	0%
Gurgaon	61%	60%	51%	48%	49%	1%
Mahendergarh	59%	60%	50%	49%	51%	-1%
Jhajjar	58%	59%	48%	48%	51%	-1%
Rewari	56%	56%	49%	47%	50%	0%
Rohtak	55%	55%	46%	44%	45%	0%
Bhiwani	51%	53%	45%	43%	45%	-2%
Faridabad	52%	53%	43%	42%	43%	-1%
Panipat	52%	52%	43%	42%	43%	0%
Jind	50%	51%	43%	42%	41%	-1%
Karnal	50%	51%	42%	40%	44%	-1%
Ambala	50%	50%	42%	39%	40%	0%
Sirsa	49%	50%	40%	38%	40%	-1%
Kaithal	49%	49%	42%	40%	43%	0%
Hisar	49%	49%	42%	40%	41%	0%
Panchkula	48%	48%	42%	39%	40%	0%
Kurukshetra	47%	48%	42%	41%	42%	-1%
Fatehabad	47%	48%	41%	40%	39%	-1%
Palwal	47%	47%	37%	35%	34%	0%
Yamuna Nagar	44%	44%	37%	36%	36%	0%
Mewat	38%	38%	27%	26%	22%	0%
Haryana	51%	52%	43%	41%	42%	-1%

While discussing the class wise individual subjects at primary level across months, it has been found that performance of class 1st students in Hindi has increased in comparison to October month. In class 2nd, performance of students in Hindi has increased marginally in comparison of October. In class 3rd, it has decreased from 51% in October to 45% in November. In English, performance of students has increased in all primary classes except in 1st and 2nd class, where it has decreased. In Mathematics, it has increased in class 3rd and 5th, however in class 1st and 4th it has decreased and in class 2nd, it has remained unchanged (Table 4).

Class	Month	Hindi	English	Maths	EVS
1st	November	64%	66%	65%	-----
	October	56%	70%	66%	-----
	August	57%	59%	56%	-----
	July	72%	63%	59%	-----
	May	68%	68%	68%	-----
2nd	November	62%	55%	63%	-----
	October	61%	59%	63%	-----
	August	54%	47%	49%	-----
	July	47%	64%	56%	-----
	May	55%	66%	61%	-----
3rd	November	45%	51%	59%	45%
	October	51%	48%	57%	39%
	August	36%	28%	46%	29%
	July	35%	34%	37%	46%
	May	35%	35%	46%	31%
4th	November	56%	50%	47%	48%
	October	54%	46%	50%	52%
	August	41%	51%	38%	34%
	July	38%	24%	31%	33%
	May	42%	38%	36%	38%
5th	November	59%	49%	47%	56%
	October	60%	44%	42%	47%
	August	46%	43%	37%	43%
	July	48%	34%	38%	36%
	May	48%	38%	45%	42%

Across classes in Hindi, performance of students has decreased in class 3rd in comparison of class 1st and 2nd, however in class 4th and 5th it has increased again. In English and Mathematics, it decreases as we move from lower to upper classes at primary level. In EVS, performance has increased from class 3rd to class 4th and to class 5th (Graph 1).



At upper Primary level, class wise performance in individual subjects across months shows that in Hindi, it has increased in class 6th, however decreased in class 7th and 8th. In English, it has decreased in all the classes. In Mathematics, performance has increased in class 7th and 8th but decreased in class 6th. In Social Studies and, it has increased in class 6th and 8th but decreased in class 7th (Table 5).

Class	Month	Hindi	English	Mathematics	Social Studies	Science
6th	November	62%	31%	33%	43%	45%
	October	55%	35%	36%	42%	39%
	August	41%	22%	24%	29%	27%
	July	37%	21%	23%	27%	25%
	May	37%	23%	33%	34%	34%
7th	November	62%	43%	42%	45%	35%
	October	65%	47%	33%	50%	48%
	August	55%	29%	32%	36%	39%
	July	48%	27%	28%	34%	31%
	May	40%	28%	29%	41%	38%
8th	November	61%	40%	29%	55%	63%
	October	68%	53%	28%	47%	54%
	August	50%	34%	42%	43%	39%
	July	50%	28%	30%	36%	45%
	May	45%	31%	31%	47%	41%

Across classes in Hindi, performance of students remained almost equal in all classes. In English and Maths, it has increased from class 6th to 7th but decreased in class 8th. In Social Studies, performance of students increases as we move from class 6th to 8th. In Science, performance has decreased class 6th to class 7th but increased in class 8th (Graph 2).

